

Features

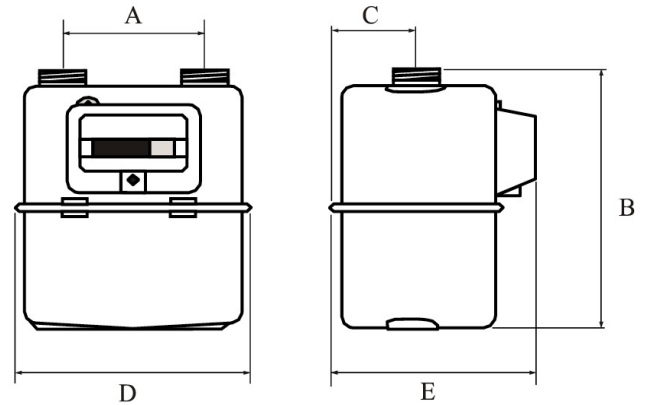
- Pulse output (1/cu ft)
- Sealed register for tamper resistance
- Compact design
- Low noise
- Bolted lightweight aluminum case
- Sprague #1A connections, NOT tapered NPT

Specifications

- Flows from 1.4 ft³/hr
- Working temperature range: 4° F to 122° F
- Pulse output 12VDC max @ 10mA
- 7.5 psi max operating pressure
- 0.04 cu ft cyclic volume

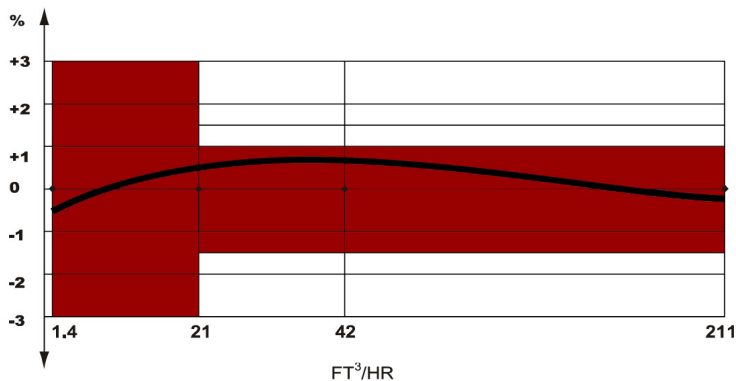
Application

For use in submetering applications where compact size and pulse output are desired. The MTW G4 gas meter is designed for environments where temperature compensation is not required. The meter incorporates Sprague #1A top connections to allow industry standard swivels to be installed thus negating the need for plumbers to “field design” a union system. This straight mechanical thread configuration is standard for all municipal meters as it allows the swivels to seal on a flat washer rather than on pipe dope and tapered NPT threads. The MTW G4 gas meter is approved by NTEP.



Meter Case Material	A (in)	B (in)	C (in)	D (in)	E (in)	Wgt (lbs)	Connection Threads
Aluminum	5.125	8.75	2.875	8.25	6.9	4.4	Sprague #1A

Typical Accuracy Curve



Pressure Loss Curve

